

Chem-Impex International, Inc.

Tel: (630) 766-2112

E-mail: sales@chemimpex.com

Shipping and Correspondence:

935 Dillon Drive

Wood Dale, IL 60191

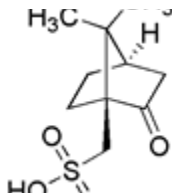
Fax: (630) 766-2218

Web site: www.chemimpex.com

Manufacturing site:

825 Dillon Drive

Wood Dale, IL 60191



Product Specifications

Catalogue Number 24588
Product **(S)-(+)-Camphor-10-sulphonic acid**

(+)-Camphor-10-sulfonic acid

CAS Number 3144-16-9

Molecular Formula C₁₀H₁₆O₄S

Molecular Weight 232.3

Appearance Off-white or white crystalline powder

Melting Point 193 - 202 °C

Optical Rotation [α]_D²⁰ = 21 - 23 ° (C=20 in H₂O)

Loss on Drying ≤ 1.0%

Assay by titration ≥ 99%

Storage Store at 0 - 8 °C

For Laboratory Use Only