

Chem-Impex International, Inc.

Tel: (630) 766-2112

E-mail: sales@chemimpex.com

Shipping and Correspondence:

935 Dillon Drive

Wood Dale, IL 60191

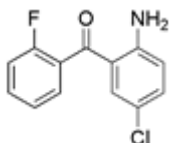
Fax: (630) 766-2218

Web site: www.chemimpex.com

Manufacturing site:

825 Dillon Drive

Wood Dale, IL 60191



Product Specifications

Catalogue Number	24577
Product	2-Amino-5-chloro-2'-fluorobenzophenone
CAS Number	784-38-3
Molecular Formula	C ₁₃ H ₉ ClFNO
Molecular Weight	249.67

Appearance	Yellow crystalline powder
Solubility	Soluble in methanol
Melting Point	95 - 97 °C
Loss on Drying	≤ 0.5%
Related Substances	Total impurities : ≤ 0.5% The largest single impurity : ≤ 0.3% 2-Amino-2,5-dichlorobenzophenone : Not detectable
Purity by HPLC	≥ 99%
Storage	Store at 0 - 8 °C

For Laboratory Use Only