

Chem-Impex International, Inc.

Tel: (630) 766-2112

E-mail: sales@chemimpex.com

Shipping and Correspondence:

935 Dillon Drive

Wood Dale, IL 60191

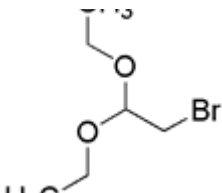
Fax: (630) 766-2218

Web site: www.chemimpex.com

Manufacturing site:

825 Dillon Drive

Wood Dale, IL 60191



Product Specifications

Catalogue Number	24438
Product	1,1-Diethoxy-2-bromoethane 2,2-Diethoxyethyl bromide Bromoacetaldehyde diethyl acetal
CAS Number	2032-35-1
Molecular Formula	C ₆ H ₁₃ BrO ₂
Molecular Weight	197.07
Appearance	Clear, colorless to yellow liquid
Purity by GC	≥ 98.5%
Storage	Store at 0-8°C

For Laboratory Use Only