

Chem-Impex International, Inc.

Tel: (630) 766-2112

E-mail: sales@chemimpex.com

Shipping and Correspondence:

935 Dillon Drive

Wood Dale, IL 60191

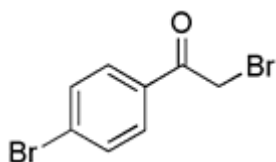
Fax: (630) 766-2218

Web site: www.chemimpex.com

Manufacturing site:

825 Dillon Drive

Wood Dale, IL 60191



Product Specifications

Catalogue Number	24437
Product	4-Bromophenacyl bromide 2,4'-Dibromoacetophenone 2-Bromo-1-(4-bromophenyl)ethanone
CAS Number	99-73-0
Molecular Formula	C ₈ H ₆ Br ₂ O
Molecular Weight	277.94

Appearance	White to off-white crystalline powder
Melting Point	104 - 117 °C
Assay	≥ 98%
Storage	Store at 0 - 8 °C

For Laboratory Use Only