

Chem-Impex International, Inc.

Tel: (630) 766-2112

E-mail: sales@chemimpex.com

Shipping and Correspondence:

935 Dillon Drive

Wood Dale, IL 60191

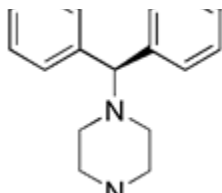
Fax: (630) 766-2218

Web site: www.chemimpex.com

Manufacturing site:

825 Dillon Drive

Wood Dale, IL 60191



Product Specifications

Catalogue Number	24373
Product	(-)-1-[(4-Chlorophenyl)phenylmethyl]piperazine
	(R)-1-[(4-Chlorophenyl)phenylmethyl]piperazine
CAS Number	130018-88-1, 300543-56-0
Molecular Formula	C ₁₇ H ₁₉ ClN ₂
Molecular Weight	286.8

Appearance	White to light yellow powder
Solubility	Freely soluble in Methanol and insoluble in Water.
Optical Rotation	[α] _D ²⁰ = -13.0° to -16.5° (C=1 in MeOH)
Analysis by Mass Spectra	Conforms to structure
Loss on Drying	≤ 0.5% (60 °C, 3h)
Related Substances	PTSA: ≤ 0.5% LC-04: ≤ 0.5% LC-05: ≤ 0.5% Unknown impurities: ≤ 0.5% Total impurities: ≤ 2.0%
¹H NMR	Conforms to structure
Chiral HPLC	≥ 99.5% (ee)
Purity by HPLC	≥ 99%
Storage	Store at 0-8 °C
Additional Information	S- isomer content: ≤ 0.5%

For Laboratory Use Only