

Chem-Impex International, Inc.

Tel: (630) 766-2112

E-mail: sales@chemimpex.com

Shipping and Correspondence:

935 Dillon Drive

Wood Dale, IL 60191

Fax: (630) 766-2218

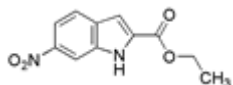
Web site: www.chemimpex.com

Manufacturing site:

825 Dillon Drive

Wood Dale, IL 60191

Product Specifications



Catalogue Number	24321
Product	Ethyl 6-nitro-1H-indole-2-carboxylate
CAS Number	16792-45-3
Molecular Formula	C ₁₁ H ₁₀ N ₂ O ₄
Molecular Weight	234.21

Appearance	Yellow solid
¹H NMR	Conforms to structure
Purity by HPLC	≥ 98%
Storage	Store at 0-8 °C

For Laboratory Use Only