

# Chem-Impex International, Inc.

---

**Tel:** (630) 766-2112

**E-mail:** sales@chemimpex.com

**Shipping and Correspondence:**

935 Dillon Drive

Wood Dale, IL 60191

**Fax:** (630) 766-2218

**Web site:** www.chemimpex.com

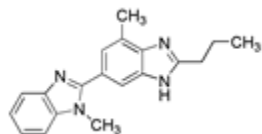
**Manufacturing site:**

825 Dillon Drive

Wood Dale, IL 60191

---

## Product Specifications



<b>Catalogue Number</b>	24208
<b>Product</b>	<b>2-N-Propyl-4-methyl-6-(1-methylbenzimidazole-2-yl)benzimidazole</b>
<b>CAS Number</b>	152628-02-9
<b>Molecular Formula</b>	C <sub>19</sub> H <sub>20</sub> N <sub>4</sub>
<b>Molecular Weight</b>	304.4
<hr/>	
<b>Appearance</b>	White to off-white powder
<b>Infrared Spectrum</b>	Conforms to structure
<b>Loss on Drying</b>	≤ 1%
<b>Related Substances</b>	Single: ≤ 0.5%, Total: ≤ 1%
<b>Purity by HPLC</b>	≥ 99%
<b>Storage</b>	Store at 0-8°C
<b>Additional Information</b>	Methanol: ≤ 3000 ppm

**For Laboratory Use Only**