

Chem-Impex International, Inc.

Tel: (630) 766-2112

E-mail: sales@chemimpex.com

Shipping and Correspondence:

935 Dillon Drive

Wood Dale, IL 60191

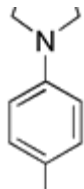
Fax: (630) 766-2218

Web site: www.chemimpex.com

Manufacturing site:

825 Dillon Drive

Wood Dale, IL 60191



Product Specifications

Catalogue Number	24164
Product	4-Pyrrolidin-1-ylaniline
	4-(1-Pyrrolidinyl)aniline
	4-Pyrrolidin-1-yl-phenylamine
CAS Number	2632-65-7
Molecular Formula	C ₁₀ H ₁₄ N ₂
Molecular Weight	162.24
<hr/>	
Appearance	Dark purple crystalline solid
¹H NMR	Conforms to structure
Purity by HPLC	≥ 96%
Storage	Store at 0-8°C

For Laboratory Use Only