

Chem-Impex International, Inc.

Tel: (630) 766-2112

E-mail: sales@chemimpex.com

Shipping and Correspondence:

935 Dillon Drive

Wood Dale, IL 60191

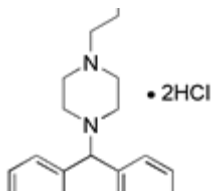
Fax: (630) 766-2218

Web site: www.chemimpex.com

Manufacturing site:

825 Dillon Drive

Wood Dale, IL 60191



Product Specifications

Catalogue Number	24138
Product	4-[(4-Chlorophenyl)phenylmethyl]-1-
CAS Number	164726-80-1
Molecular Formula	C ₁₉ H ₂₃ ClN ₂ O•2HCl
Molecular Weight	403.78

Appearance	White solid
Analysis by Mass Spectra	Conforms to standard
¹³ C NMR	Conforms to structure
¹ H NMR	Conforms to structure
Purity by HPLC	≥ 99%
Storage	Store at 0-8 °C

For Laboratory Use Only