

# Chem-Impex International, Inc.

---

**Tel:** (630) 766-2112

**E-mail:** sales@chemimpex.com

**Shipping and Correspondence:**

935 Dillon Drive

Wood Dale, IL 60191

**Fax:** (630) 766-2218

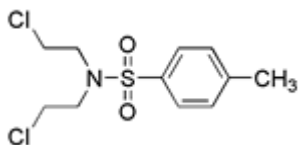
**Web site:** www.chemimpex.com

**Manufacturing site:**

825 Dillon Drive

Wood Dale, IL 60191

---



## Product Specifications

<b>Catalogue Number</b>	24133
<b>Product</b>	<b><i>N,N</i>-Bis(2-chloroethyl)-<i>p</i>-toluenesulfonamide</b> <i>N,N</i> -Bis(2-chloroethyl)-4-methylbenzenesulfonamide
<b>CAS Number</b>	42137-88-2
<b>Molecular Formula</b>	C <sub>11</sub> H <sub>15</sub> Cl <sub>2</sub> NO <sub>2</sub> S
<b>Molecular Weight</b>	296.22
<b>Appearance</b>	Off-white solid
<b>Melting Point</b>	45-50 °C
<b>Purity by HPLC</b>	≥ 99%
<b>Storage</b>	Store at 0-8°C

---

**For Laboratory Use Only**