

Chem-Impex International, Inc.

Tel: (630) 766-2112

E-mail: sales@chemimpex.com

Shipping and Correspondence:

935 Dillon Drive

Wood Dale, IL 60191

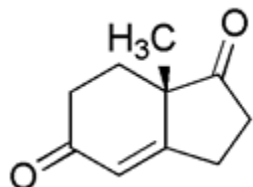
Fax: (630) 766-2218

Web site: www.chemimpex.com

Manufacturing site:

825 Dillon Drive

Wood Dale, IL 60191



Product Specifications

Catalogue Number	24126
Product	(S)-(+)-2,3,7,7a-Tetrahydro-7a-methyl-1H-indene-1,5(6H)-dione (S)-(+)-Hajos-Parrish diketone (+)-5,6,7,8-Tetrahydro-8-methylindan-1,5-dione
CAS Number	17553-86-5
Molecular Formula	C ₁₀ H ₁₂ O ₂
Molecular Weight	164.2
Appearance	Brown to orange solid
Optical Rotation	[α] ²⁰ ₅₈₉ = + 352 ± 2° (C=1 in EtOH)
Analysis by Mass Spectra	Conforms to structure
¹³C NMR	Conforms to structure
¹H NMR	Conforms to structure
Purity by HPLC	≥ 99%
Storage	Store at 0-8 °C

For Laboratory Use Only