

Chem-Impex International, Inc.

Tel: (630) 766-2112

E-mail: sales@chemimpex.com

Shipping and Correspondence:

935 Dillon Drive

Wood Dale, IL 60191

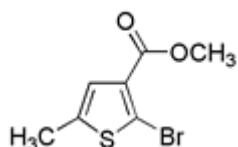
Fax: (630) 766-2218

Web site: www.chemimpex.com

Manufacturing site:

825 Dillon Drive

Wood Dale, IL 60191



Product Specifications

Catalogue Number	24055
Product	Methyl 5-Bromo-2-methylthiophene-4-
CAS Number	944709-72-2
Molecular Formula	C ₇ H ₇ BrO ₂ S
Molecular Weight	233.94

Appearance	Light yellow liquid
¹H NMR	Conforms to structure
Purity by HPLC	≥ 95%
Storage	Store at 0 - 8 °C

For Laboratory Use Only