

Chem-Impex International, Inc.

Tel: (630) 766-2112

E-mail: sales@chemimpex.com

Shipping and Correspondence:

935 Dillon Drive

Wood Dale, IL 60191

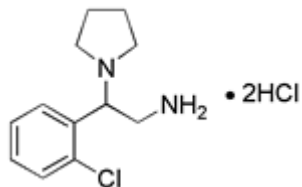
Fax: (630) 766-2218

Web site: www.chemimpex.com

Manufacturing site:

825 Dillon Drive

Wood Dale, IL 60191



Product Specifications

Catalogue Number	23814
Product	2-(2-Chlorophenyl)-2-pyrrolidinyloethylamine dihydrochloride
CAS Number	1188265-89-5
Molecular Formula	C ₁₂ H ₁₇ ClN ₂ •2HCl
Molecular Weight	297.66

Appearance	Yellow to brown solid
¹ H NMR	Conforms to structure
Assay	≥ 95%
Storage	Store at 0-8 °C

For Laboratory Use Only