

Chem-Impex International, Inc.

Tel: (630) 766-2112

E-mail: sales@chemimpex.com

Shipping and Correspondence:

935 Dillon Drive

Wood Dale, IL 60191

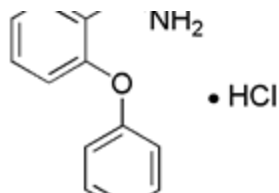
Fax: (630) 766-2218

Web site: www.chemimpex.com

Manufacturing site:

825 Dillon Drive

Wood Dale, IL 60191



Product Specifications

Catalogue Number	23807
Product	1-(2-Phenoxyphenyl)ethan-1-amine hydrochloride 2-Phenoxybenzylamine hydrochloride
CAS Number	31963-35-6
Molecular Formula	C ₁₃ H ₁₃ NO•HCl
Molecular Weight	235.71
<hr/>	
Appearance	Off-white solid
Analysis by Mass Spectra	Conforms to standard
¹³C NMR	Conforms to structure
¹H NMR	Conforms to structure
Purity by HPLC	≥ 90%
Storage	Store at 0-8°C

For Laboratory Use Only