

Chem-Impex International, Inc.

Tel: (630) 766-2112

E-mail: sales@chemimpex.com

Shipping and Correspondence:

935 Dillon Drive

Wood Dale, IL 60191

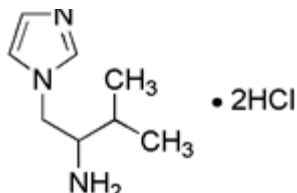
Fax: (630) 766-2218

Web site: www.chemimpex.com

Manufacturing site:

825 Dillon Drive

Wood Dale, IL 60191



Product Specifications

Catalogue Number	23718
Product	2-Imidazol-1-yl-1-Isopropyl-Ethylamine Dihydrochloride
CAS Number	1172472-37-5
Molecular Formula	C ₈ H ₁₅ N ₃ •2HCl
Molecular Weight	226.15

Appearance	White to yellow powder
¹ H NMR	Conforms to structure
Purity	≥ 95%
Storage	Store at 0-8°C

For Laboratory Use Only