

# Chem-Impex International, Inc.

---

**Tel:** (630) 766-2112

**E-mail:** sales@chemimpex.com

**Shipping and Correspondence:**

935 Dillon Drive

Wood Dale, IL 60191

**Fax:** (630) 766-2218

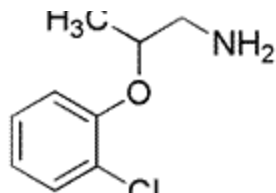
**Web site:** www.chemimpex.com

**Manufacturing site:**

825 Dillon Drive

Wood Dale, IL 60191

---



## Product Specifications

**Catalogue Number** 23694

**Product** **2-(2-Chlorophenoxy)propylamine**

**CAS Number** 886763-29-7

**Molecular Formula** C<sub>9</sub>H<sub>12</sub>ClNO

**Molecular Weight** 185.65

---

**Appearance** Colorless liquid

**Solubility** Ethanol, Chloroform

**Boiling point** 108-112 °C / 3 mmHg

**Elemental Analysis (Theory)** C = 58.23%; H = 6.52%; N = 7.54%

**Elemental Analysis (Found)** C = 58.29 ± 0.5%, H = 6.54 ± 0.5%, N = 7.56 ± 0.5%

**Analysis by Mass Spectra** Conforms to standard

**<sup>1</sup>H NMR** Conforms to structure

**Purity by HPLC** ≥ 95%

**Storage** Store at 0-8 °C

**For Laboratory Use Only**