

Chem-Impex International, Inc.

Tel: (630) 766-2112

E-mail: sales@chemimpex.com

Shipping and Correspondence:

935 Dillon Drive

Wood Dale, IL 60191

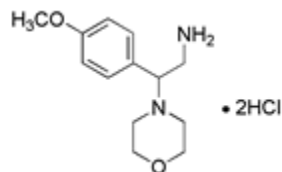
Fax: (630) 766-2218

Web site: www.chemimpex.com

Manufacturing site:

825 Dillon Drive

Wood Dale, IL 60191



Product Specifications

Catalogue Number	23689
Product	2-(4-Methoxyphenyl)-2-Morpholin-4-Ylethylamine Dihydrochloride
CAS Number	31466-47-4
Molecular Formula	C ₁₃ H ₂₀ N ₂ O ₂ •2HCl
Molecular Weight	309.24

Appearance	Off-white solid
¹³ C NMR	Conforms to structure
¹ H NMR	Conforms to structure
Purity	≥ 99% (ELSD)
Storage	Store at 0-8°C

For Laboratory Use Only