

Chem-Impex International, Inc.

Tel: (630) 766-2112

E-mail: sales@chemimpex.com

Shipping and Correspondence:

935 Dillon Drive

Wood Dale, IL 60191

Fax: (630) 766-2218

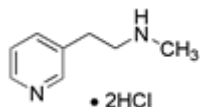
Web site: www.chemimpex.com

Manufacturing site:

825 Dillon Drive

Wood Dale, IL 60191

Product Specifications



Catalogue Number	23587
Product	3-[2-(Methylamino)ethyl]pyridine dihydrochloride <i>N</i> -Methyl-2-(pyridin-3-yl)ethanamine dihydrochloride
CAS Number	1003561-87-2
Molecular Formula	C ₈ H ₁₂ N ₂ •2HCl
Molecular Weight	209.12
Appearance	Solid
¹H NMR	Conforms to structure
Purity	≥ 95% (NMR)
Storage	Store at 0-8°C

For Laboratory Use Only