

# Chem-Impex International, Inc.

---

**Tel:** (630) 766-2112

**E-mail:** sales@chemimpex.com

**Shipping and Correspondence:**

935 Dillon Drive

Wood Dale, IL 60191

**Fax:** (630) 766-2218

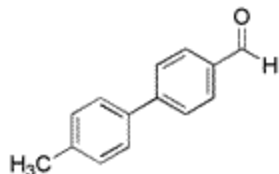
**Web site:** www.chemimpex.com

**Manufacturing site:**

825 Dillon Drive

Wood Dale, IL 60191

---



## Product Specifications

<b>Catalogue Number</b>	23502
<b>Product</b>	<b>4'-Methyl-4-formylbiphenyl</b>  4'-Methyl[1,1'-biphenyl]-4-carbaldehyde  4'-Methyl[1,1'-biphenyl]-4-carboxaldehyde
<b>CAS Number</b>	36393-42-7
<b>Molecular Formula</b>	C <sub>14</sub> H <sub>12</sub> O
<b>Molecular Weight</b>	196.25
<hr/>	
<b>Appearance</b>	White to off-white crystalline powder
<b>Melting Point</b>	105-114 °C
<b>Elemental Analysis (Found)</b>	C = 85.68 ± 0.5%; H = 6.16 ± 0.5%
<b><sup>1</sup>H NMR</b>	Conforms to structure
<b>LCMS</b>	Conforms to structure
<b>Purity by HPLC</b>	≥ 97% (241.4 nm)
<b>Storage</b>	Store at 0-8 °C

**For Laboratory Use Only**