

Chem-Impex International, Inc.

Tel: (630) 766-2112

E-mail: sales@chemimpex.com

Shipping and Correspondence:

935 Dillon Drive

Wood Dale, IL 60191

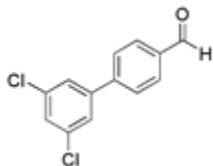
Fax: (630) 766-2218

Web site: www.chemimpex.com

Manufacturing site:

825 Dillon Drive

Wood Dale, IL 60191



Product Specifications

Catalogue Number 23425
Product **4-(3,5-Dichlorophenyl)benzaldehyde**

3',5'-Dichloro[1,1'-biphenyl]-4-carbaldehyde

CAS Number 221018-04-8

Molecular Formula C₁₃H₈Cl₂O

Molecular Weight 251.11

Appearance White to off-white powder

Melting Point 117-125 °C

¹H NMR Conforms to structure

LCMS Conforms to structure

Purity by HPLC ≥ 96%

Storage Store at 0-8°C

For Laboratory Use Only