

Chem-Impex International, Inc.

Tel: (630) 766-2112

E-mail: sales@chemimpex.com

Shipping and Correspondence:

935 Dillon Drive

Wood Dale, IL 60191

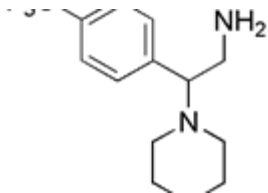
Fax: (630) 766-2218

Web site: www.chemimpex.com

Manufacturing site:

825 Dillon Drive

Wood Dale, IL 60191



Product Specifications

Catalogue Number	23402
Product	2-Morpholin-4-yl-2-[4-(Trifluoromethyl)Phenyl]Ethylamine
Molecular Formula	C ₁₃ H ₁₇ F ₃ N ₂ O
Molecular Weight	274.28

Appearance	White to yellow solid
Analysis by Mass Spectra	Conforms to structure
¹³C NMR	Conforms to structure
¹H NMR	Conforms to structure
Purity	≥ 95% (NMR)
Storage	Store at 0-8°C

For Laboratory Use Only