

Chem-Impex International, Inc.

Tel: (630) 766-2112

E-mail: sales@chemimpex.com

Shipping and Correspondence:

935 Dillon Drive

Wood Dale, IL 60191

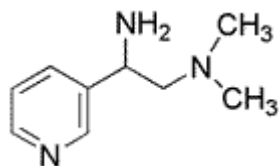
Fax: (630) 766-2218

Web site: www.chemimpex.com

Manufacturing site:

825 Dillon Drive

Wood Dale, IL 60191



Product Specifications

Catalogue Number	23395
Product	2-Amino-1-(3-pyridyl)ethyl dimethylamine
CAS Number	638220-38-9
Molecular Formula	C ₉ H ₁₅ N ₃
Molecular Weight	165.24

Appearance	Red viscous liquid
¹H NMR	Conforms to structure
Purity	≥ 95% (NMR)
Storage	Store at 0 - 8 °C

For Laboratory Use Only