

# Chem-Impex International, Inc.

---

**Tel:** (630) 766-2112

**E-mail:** sales@chemimpex.com

**Shipping and Correspondence:**

935 Dillon Drive

Wood Dale, IL 60191

**Fax:** (630) 766-2218

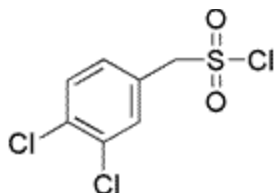
**Web site:** www.chemimpex.com

**Manufacturing site:**

825 Dillon Drive

Wood Dale, IL 60191

---



## Product Specifications

**Catalogue Number** 23389  
**Product** **(3,4-Dichlorophenyl)-methanesulfonyl chloride**

[(3,4-Dichlorophenyl)methyl]sulfonyl chloride

3,4-Dichloro- $\alpha$ -toluenesulfonyl chloride

**CAS Number** 85952-30-3

**Molecular Formula** C<sub>7</sub>H<sub>5</sub>Cl<sub>3</sub>O<sub>2</sub>S

**Molecular Weight** 259.54

---

**Appearance** White crystals

**Solubility** Soluble in Benzene, Chloroform

**Melting Point** 67-72 °C

**Elemental Analysis (Theory)** C = 32.40%; H = 1.94%; Cl = 40.98%

**Elemental Analysis (Found)** C = 32.56 ± 0.5%; H = 1.91 ± 0.5%; N = 40.91 ± 0.5%

**Analysis by Mass Spectra** Conforms to standard

**<sup>1</sup>H NMR** Conforms to structure

**Purity by HPLC** ≥ 95%

**Storage** Store at 0-8°C

**For Laboratory Use Only**