

Chem-Impex International, Inc.

Tel: (630) 766-2112

E-mail: sales@chemimpex.com

Shipping and Correspondence:

935 Dillon Drive

Wood Dale, IL 60191

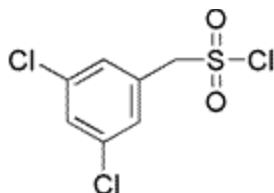
Fax: (630) 766-2218

Web site: www.chemimpex.com

Manufacturing site:

825 Dillon Drive

Wood Dale, IL 60191



Product Specifications

Catalogue Number	23388
Product	(3,5-Dichlorophenyl)methanesulfonyl chloride 3,5-Dichloro- α -toluenesulfonyl chloride
CAS Number	163295-70-3
Molecular Formula	C ₇ H ₅ Cl ₃ O ₂ S
Molecular Weight	259.54
Appearance	White solid
¹H NMR	Conforms to structure
Purity	≥ 95% (NMR)
Storage	Store at 0-8 °C

For Laboratory Use Only