

Chem-Impex International, Inc.

Tel: (630) 766-2112

E-mail: sales@chemimpex.com

Shipping and Correspondence:

935 Dillon Drive

Wood Dale, IL 60191

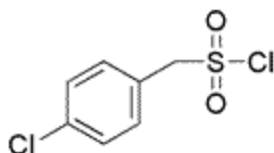
Fax: (630) 766-2218

Web site: www.chemimpex.com

Manufacturing site:

825 Dillon Drive

Wood Dale, IL 60191



Product Specifications

Catalogue Number	23387
Product	4-Chlorobenzylsulfonyl chloride [(4-Chlorophenyl)methyl]sulfonyl chloride
CAS Number	6966-45-6
Molecular Formula	C ₇ H ₆ Cl ₂ O ₂ S
Molecular Weight	225.09
Appearance	White crystalline powder
Melting Point	90-95 °C
Elemental Analysis (Theory)	Cl = 31.54%
Elemental Analysis (Found)	Cl = 31.56 ± 1%
Water Content (Karl Fisher)	≤ 0.5%
¹H NMR	Conforms to structure
Purity	≥ 95% (NMR)
Storage	Store at 0-8 °C

For Laboratory Use Only