

Chem-Impex International, Inc.

Tel: (630) 766-2112

E-mail: sales@chemimpex.com

Shipping and Correspondence:

935 Dillon Drive

Wood Dale, IL 60191

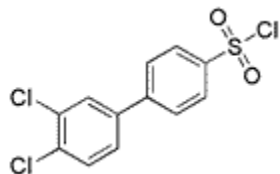
Fax: (630) 766-2218

Web site: www.chemimpex.com

Manufacturing site:

825 Dillon Drive

Wood Dale, IL 60191



Product Specifications

Catalogue Number	23381
Product	3',4'-Dichloro[1,1'-biphenyl]-4-sulfonyl chloride [4-(3,4-dichlorophenyl)phenyl]sulphonyl chloride
CAS Number	501697-80-9
Molecular Formula	C ₁₂ H ₇ Cl ₃ O ₂ S
Molecular Weight	321.61

Appearance	White to off-white crystals
Melting Point	102-110 °C
Elemental Analysis (Found)	C = 44.82 ± 0.5%; H = 2.19 ± 0.5%; Cl = 33.07 ± 0.5%; S = 9.97 ± 0.5%
¹H NMR	Conforms to structure
Purity	≥ 96% (NMR)
Storage	Store at 0-8 °C

For Laboratory Use Only