

Chem-Impex International, Inc.

Tel: (630) 766-2112

E-mail: sales@chemimpex.com

Shipping and Correspondence:

935 Dillon Drive

Wood Dale, IL 60191

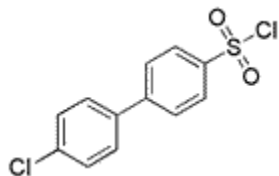
Fax: (630) 766-2218

Web site: www.chemimpex.com

Manufacturing site:

825 Dillon Drive

Wood Dale, IL 60191



Product Specifications

Catalogue Number	23379
Product	4'-Chloro[1,1'-biphenyl]-4-sulfonyl chloride
	4-(4-Chlorophenyl)benzenesulfonyl chloride
CAS Number	20443-74-7
Molecular Formula	C ₁₂ H ₈ Cl ₂ O ₂ S
Molecular Weight	287.17

Appearance	White crystalline powder
Solubility	Soluble in organic solvents
¹H NMR	Conforms to structure
LCMS	Conforms to structure
Purity	≥ 95% (NMR)
Storage	Store at 0-8 °C

For Laboratory Use Only