

Chem-Impex International, Inc.

Tel: (630) 766-2112

E-mail: sales@chemimpex.com

Shipping and Correspondence:

935 Dillon Drive

Wood Dale, IL 60191

Fax: (630) 766-2218

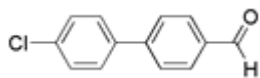
Web site: www.chemimpex.com

Manufacturing site:

825 Dillon Drive

Wood Dale, IL 60191

Product Specifications



Catalogue Number 23372

Product **4'-Chlorobiphenyl-4-carbaldehyde**

4-(4-Chlorophenyl)benzaldehyde

4'-Chloro[1,1'-biphenyl]-4-carbaldehyde

Molecular Formula C₁₃H₉ClO

Molecular Weight 216.67

Appearance Off-white to yellowish powder or crystals

Melting Point 110-116 °C

Elemental Analysis (Found) C = 72.07 ± 0.5%; H = 4.19 ± 0.5%; Cl = 16.36 ± 0.5%

¹H NMR Conforms to structure

LCMS Conforms to structure

Purity by HPLC ≥ 96%

Storage Store at 0-8°C

For Laboratory Use Only