

Chem-Impex International, Inc.

Tel: (630) 766-2112

E-mail: sales@chemimpex.com

Shipping and Correspondence:

935 Dillon Drive

Wood Dale, IL 60191

Fax: (630) 766-2218

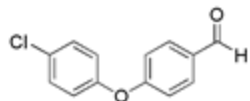
Web site: www.chemimpex.com

Manufacturing site:

825 Dillon Drive

Wood Dale, IL 60191

Product Specifications



Catalogue Number 23364

Product **4-(4-Chlorophenoxy)benzaldehyde**

4-Chloro-4'-formyldiphenyl ether

CAS Number 61343-99-5

Molecular Formula C₁₃H₉ClO₂

Molecular Weight 232.67

Appearance White shining powder

Melting Point 54-60 °C

Purity by HPLC ≥ 99%

Storage Store at 0-8 °C

For Laboratory Use Only