

Chem-Impex International, Inc.

Tel: (630) 766-2112

E-mail: sales@chemimpex.com

Shipping and Correspondence:

935 Dillon Drive

Wood Dale, IL 60191

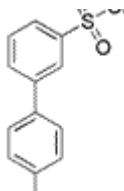
Fax: (630) 766-2218

Web site: www.chemimpex.com

Manufacturing site:

825 Dillon Drive

Wood Dale, IL 60191



Product Specifications

Catalogue Number 23352
Product **[3-(4-Methoxyphenyl)phenyl]sulfonyl chloride**

4'-Methoxy-biphenyl-3-sulfonyl chloride

CAS Number 799283-94-6

Molecular Formula C₁₃H₁₁ClO₃S

Molecular Weight 282.75

Appearance White crystalline powder

Elemental Analysis (Theory) C = 55.22%, H = 3.92%, S = 11.34%, Cl = 12.56%

Elemental Analysis (Found) C = 55.22 ± 0.5%, H = 3.92 ± 0.5%,
S = 11.34 ± 0.5%, Cl = 12.56 ± 0.5%

¹H NMR Conforms to structure

Assay ≥ 98%

Storage Store at 0-8 °C

For Laboratory Use Only