

Chem-Impex International, Inc.

Tel: (630) 766-2112

E-mail: sales@chemimpex.com

Shipping and Correspondence:

935 Dillon Drive

Wood Dale, IL 60191

Fax: (630) 766-2218

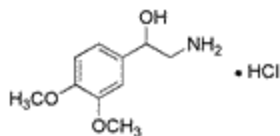
Web site: www.chemimpex.com

Manufacturing site:

825 Dillon Drive

Wood Dale, IL 60191

Product Specifications



Catalogue Number	23302
Product	2-Hydroxy-2-(3,4-dimethoxyphenyl)ethylamine hydrochloride 2-Amino-1-(3,4-dimethoxyphenyl)-ethanol hydrochloride
Molecular Formula	C ₁₀ H ₁₅ NO ₃ •HCl
Molecular Weight	233.69
<hr/>	
Appearance	White crystalline powder
Melting Point	156-160 °C
Water Content (Karl Fisher)	≤ 0.5%
¹H NMR	Conforms to structure
Assay	≥ 97%
Storage	Store at 0-8°C

For Laboratory Use Only