

Chem-Impex International, Inc.

Tel: (630) 766-2112

E-mail: sales@chemimpex.com

Shipping and Correspondence:

935 Dillon Drive

Wood Dale, IL 60191

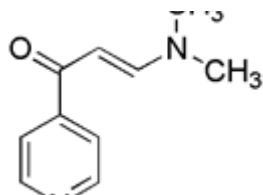
Fax: (630) 766-2218

Web site: www.chemimpex.com

Manufacturing site:

825 Dillon Drive

Wood Dale, IL 60191



Product Specifications

Catalogue Number	23257
Product	(E)-3-(Dimethylamino)-1-(pyridin-4-yl)prop-2-en-1-one 3-(Dimethylamino)-1-(4-pyridinyl)-2-propen-1-one
CAS Number	66521-53-7
Molecular Formula	C ₁₀ H ₁₂ N ₂ O
Molecular Weight	176.22
Appearance	Yellow powder
Analysis by Mass Spectra	Conforms to standard
¹³C NMR	Conforms to structure
¹H NMR	Conforms to structure
Purity by HPLC	≥ 99%
Storage	Store at 0-8°C

For Laboratory Use Only