

Chem-Impex International, Inc.

Tel: (630) 766-2112

E-mail: sales@chemimpex.com

Shipping and Correspondence:

935 Dillon Drive

Wood Dale, IL 60191

Fax: (630) 766-2218

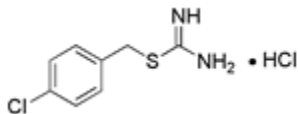
Web site: www.chemimpex.com

Manufacturing site:

825 Dillon Drive

Wood Dale, IL 60191

Product Specifications



Catalogue Number	23238
Product	S-(4-Chlorobenzyl)Isothiouronium chloride 4-Chlorobenzyl carbamimidothioate hydrochloride 2-(4-Chlorobenzyl)-2-thiopseudourea hydrochloride
CAS Number	544-47-8
Molecular Formula	C ₈ H ₉ ClN ₂ S•HCl
Molecular Weight	237.15
Appearance	White powder
Melting Point	202-209 °C
Assay by titration	≥ 99% (ex Chloride)
Storage	Store at 0-8 °C

For Laboratory Use Only