

Chem-Impex International, Inc.

Tel: (630) 766-2112

E-mail: sales@chemimpex.com

Shipping and Correspondence:

935 Dillon Drive

Wood Dale, IL 60191

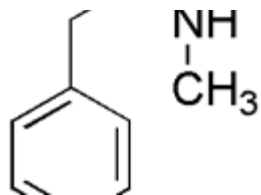
Fax: (630) 766-2218

Web site: www.chemimpex.com

Manufacturing site:

825 Dillon Drive

Wood Dale, IL 60191



Product Specifications

Catalogue Number	23237
Product	N-Methylphenethylamine
CAS Number	589-08-2
Molecular Formula	C ₉ H ₁₃ N
Molecular Weight	135.21

Appearance	Colorless to light yellow liquid
Water Content (Karl Fisher)	≤ 0.5%
¹H NMR	Conforms to structure
Purity by GC	≥ 98%
Storage	Store at 0 - 8 °C

For Laboratory Use Only