

Chem-Impex International, Inc.

Tel: (630) 766-2112

E-mail: sales@chemimpex.com

Shipping and Correspondence:

935 Dillon Drive

Wood Dale, IL 60191

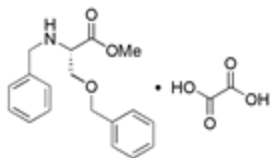
Fax: (630) 766-2218

Web site: www.chemimpex.com

Manufacturing site:

825 Dillon Drive

Wood Dale, IL 60191



Product Specifications

Catalogue Number	23177
Product	<i>N-O-Dibenzyl-L-serine methyl ester oxalate</i>
	Bzl-Ser(Bzl)-OMe•Oxalate
Molecular Formula	C ₁₈ H ₂₁ NO ₃ •C ₂ H ₂ O ₄
Molecular Weight	389.35
<hr/>	
Appearance	White crystalline powder
Melting Point	133-139 °C
Optical Rotation	[α] _D ²⁰ = -7 ± 2° (C=1 in DMF)
Assay by titration	≥ 98%
Purity by HPLC	≥ 99%
Purity by TLC	≥ 99%
Storage	Store at 0-8 °C

For Laboratory Use Only