

Chem-Impex International, Inc.

Tel: (630) 766-2112

E-mail: sales@chemimpex.com

Shipping and Correspondence:

935 Dillon Drive

Wood Dale, IL 60191

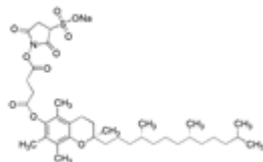
Fax: (630) 766-2218

Web site: www.chemimpex.com

Manufacturing site:

825 Dillon Drive

Wood Dale, IL 60191



Product Specifications

Catalogue Number	23159
Product	(+)-α-Tocopherol sulfo-NHS succinate
CAS Number	1644658-47-8
Molecular Formula	C ₃₇ H ₅₆ NO ₁₀ SNa
Molecular Weight	729.92

Appearance	White powder
Optical Rotation	[α] _{D20} = 1.3 \pm 1 ° (C= 0.1 in DMSO)
¹³C NMR	Conforms to structure
¹H NMR	Conforms to structure
Purity	\geq 95% (NMR)
Purity by TLC	Single spot (by PMA)
Storage	Store at 0 - 8 °C

For Laboratory Use Only