

# *Chem-Impex International, Inc.*

---

**Tel:** (630) 766-2112

**E-mail:** sales@chemimpex.com

**Shipping and Correspondence:**

935 Dillon Drive

Wood Dale, IL 60191

**Fax:** (630) 766-2218

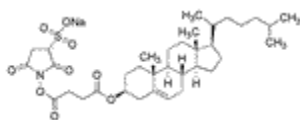
**Web site:** www.chemimpex.com

**Manufacturing site:**

825 Dillon Drive

Wood Dale, IL 60191

---



## *Product Specifications*

<b>Catalogue Number</b>	23157
<b>Product</b>	<b>(-)-Cholesterol sulfo-NHS succinate</b>
<b>Molecular Formula</b>	C <sub>35</sub> H <sub>52</sub> NO <sub>9</sub> SNa
<b>Molecular Weight</b>	685.86
<b>Appearance</b>	White powder
<b><sup>13</sup>C NMR</b>	Conforms to structure
<b><sup>1</sup>H NMR</b>	Conforms to structure
<b>Purity</b>	≥ 98% (NMR)
<b>Storage</b>	Store at 0-8 °C

---

**For Laboratory Use Only**