

Chem-Impex International, Inc.

Tel: (630) 766-2112

E-mail: sales@chemimpex.com

Shipping and Correspondence:

935 Dillon Drive

Wood Dale, IL 60191

Fax: (630) 766-2218

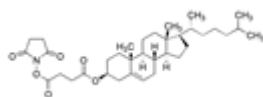
Web site: www.chemimpex.com

Manufacturing site:

825 Dillon Drive

Wood Dale, IL 60191

Product Specifications



Catalogue Number	23103
Product	(-)-Cholesterol NHS succinate
CAS Number	88848-79-7
Molecular Formula	C ₃₅ H ₅₃ NO ₆
Molecular Weight	583.81

Appearance	White powder to fluffy powder
Optical Rotation	[α] _D ²⁵ = -33 ± 2 ° (C=1 in CHCl ₃)
¹³C NMR	Conforms to structure
¹H NMR	Conforms to structure
Purity	≥ 98% (NMR)
Purity by TLC	One spot
Storage	Store at 0 - 8 °C

For Laboratory Use Only