

Chem-Impex International, Inc.

Tel: (630) 766-2112

E-mail: sales@chemimpex.com

Shipping and Correspondence:

935 Dillon Drive

Wood Dale, IL 60191

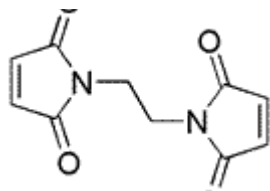
Fax: (630) 766-2218

Web site: www.chemimpex.com

Manufacturing site:

825 Dillon Drive

Wood Dale, IL 60191



Product Specifications

Catalogue Number	23078
Product	1,2-Bis(maleimido)ethane
	Ethylene-bis-maleimide
CAS Number	5132-30-9
Molecular Formula	C ₁₀ H ₈ N ₂ O ₄
Molecular Weight	220.18

Appearance	Off-white solid
Melting Point	190-195 °C
¹H NMR	Conforms to structure
Assay	≥ 98%
Storage	Store at 0-8 °C

For Laboratory Use Only