

Chem-Impex International, Inc.

Tel: (630) 766-2112

E-mail: sales@chemimpex.com

Shipping and Correspondence:

935 Dillon Drive

Wood Dale, IL 60191

Fax: (630) 766-2218

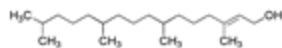
Web site: www.chemimpex.com

Manufacturing site:

825 Dillon Drive

Wood Dale, IL 60191

Product Specifications



Catalogue Number	23027
Product	Phytol (Natural isomer)
	3,7,11,15-Tetramethyl-2-hexadecen-1-ol
CAS Number	7541-49-3
Molecular Formula	C ₂₀ H ₄₀ O
Molecular Weight	296.53

Appearance	Yellow to red brown oily transparent liquid
Solubility	Soluble in common organic solvents, nearly insoluble in water.
Density	Approximately = 0.85
Refractive Index	(n ²⁵ D) = 1.4620 to 1.4640
Purity by GC	≥ 97%
Storage	Store at 0-8 °C
Additional Information	cis- isomer content: ≤ 1.0% Identification: No separation occurs at 4 °C

For Laboratory Use Only