

Chem-Impex International, Inc.

Tel: (630) 766-2112

E-mail: sales@chemimpex.com

Shipping and Correspondence:

935 Dillon Drive

Wood Dale, IL 60191

Fax: (630) 766-2218

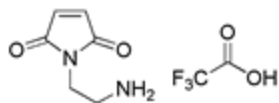
Web site: www.chemimpex.com

Manufacturing site:

825 Dillon Drive

Wood Dale, IL 60191

Product Specifications



Catalogue Number	22987
Product	2-Maleimidoethyl amine•TFA
	<i>N</i> -(2-Aminoethyl)maleimide trifluoroacetate
CAS Number	146474-00-2
Molecular Formula	C ₆ H ₈ N ₂ O ₂ •CF ₃ CO ₂ H
Molecular Weight	254.17

Appearance	White to faintly yellow-brown powder
¹³C NMR	Conforms to structure
¹H NMR	Conforms to structure
Assay	≥ 98%
Storage	Store at 0-8 °C

For Laboratory Use Only