

Chem-Impex International, Inc.

Tel: (630) 766-2112

E-mail: sales@chemimpex.com

Shipping and Correspondence:

935 Dillon Drive

Wood Dale, IL 60191

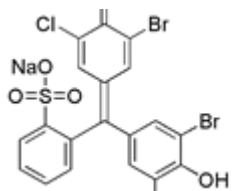
Fax: (630) 766-2218

Web site: www.chemimpex.com

Manufacturing site:

825 Dillon Drive

Wood Dale, IL 60191



Product Specifications

Catalogue Number	22977
Product	Bromochlorophenol blue sodium salt
CAS Number	102185-52-4
Molecular Formula	C ₁₉ H ₉ Br ₂ Cl ₂ O ₅ SNa
Molecular Weight	603.05

Appearance	Black to dark green powder
UV Ratios	Absorptivity 1%, 1 cm: (pH 3.0) at λ_{\max} 436.4 nm: 370-400 (pH 4.6) at λ_{\max} 589.2 nm: 900-1000
Visual Transition Range	pH 3.2 (Brownish yellow) to pH 4.8 (Blue violet to purple)
Loss on Drying	≤ 5.0% (110 °C, 1h)
Dye content	≥ 95% (Spectrophotometry)
Storage	Store at RT

For Laboratory Use Only