

Chem-Impex International, Inc.

Tel: (630) 766-2112

E-mail: sales@chemimpex.com

Shipping and Correspondence:

935 Dillon Drive

Wood Dale, IL 60191

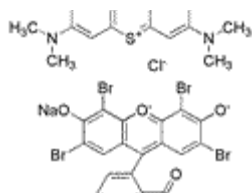
Fax: (630) 766-2218

Web site: www.chemimpex.com

Manufacturing site:

825 Dillon Drive

Wood Dale, IL 60191



Product Specifications

Catalogue Number	22973
Product	Wright stain Eosin-methylene blue, Wright
CAS Number	68988-92-1

Appearance	Dark green or green crystalline powder
Solubility	Almost clear blue to opaque solution with greenish fluorescence (0.1% MeOH)
UV Ratios	Absorptivity (1%/1 cm) : at λ_{\max} 522 - 525 nm : ≥ 650 at λ_{\max} 640 - 645 nm : ≥ 1200
Loss on Drying	$\leq 10\%$ (at 105 °C, 1hr)
Storage	Store at RT

For Laboratory Use Only