

Chem-Impex International, Inc.

Tel: (630) 766-2112

E-mail: sales@chemimpex.com

Shipping and Correspondence:

935 Dillon Drive

Wood Dale, IL 60191

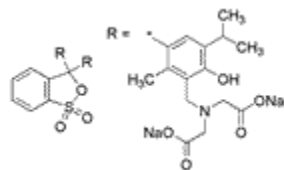
Fax: (630) 766-2218

Web site: www.chemimpex.com

Manufacturing site:

825 Dillon Drive

Wood Dale, IL 60191



Product Specifications

Catalogue Number 22955

Product **Methylthymol Blue W/S**

3,3'-Bis[*N,N*-di(carboxymethyl)aminomethyl]thymolsulfonephthalein sodium salt

CAS Number 1945-77-3

Molecular Formula C₃₇H₄₀N₂O₁₃S•4Na

Appearance Dark greenish powder

Solubility Clear solution (0.1% in distilled water)

Loss on Drying ≤ 10% (at 110 °C)

Storage Store at RT

Additional Information Absorptivity 1%/1cm (dist. water) at λ max: < 436

Suitability To pass test as a metal indicator

For Laboratory Use Only