

Chem-Impex International, Inc.

Tel: (630) 766-2112

E-mail: sales@chemimpex.com

Shipping and Correspondence:

935 Dillon Drive

Wood Dale, IL 60191

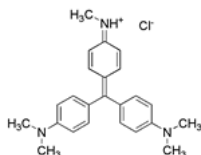
Fax: (630) 766-2218

Web site: www.chemimpex.com

Manufacturing site:

825 Dillon Drive

Wood Dale, IL 60191



Product Specifications

Catalogue Number	22950
Product	Methyl Violet 2B Basic Violet 1 CI 42535
CAS Number	8004-87-3
Molecular Formula	C ₂₄ H ₂₆ ClN ₃
Molecular Weight	393.96

Appearance	Green crystalline powder
Water Content (Karl Fisher)	≤ 1.5%
pH	3-4
UV Ratios	λ _{max} (@ 580 nm, 5mg/L MeOH + 1 mL AcOH): > 1 abs
Visual Transition Range	From pH 1 (Yellow) to pH 2.7 (Pink)
Insoluble	≤ 0.25% (MeOH)
Dye content	≥ 75%
Grade	Certifiable Grade
Storage	Store at RT

For Laboratory Use Only