

Chem-Impex International, Inc.

Tel: (630) 766-2112

E-mail: sales@chemimpex.com

Shipping and Correspondence:

935 Dillon Drive

Wood Dale, IL 60191

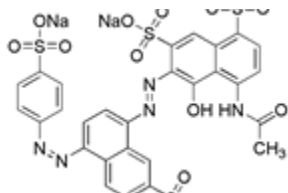
Fax: (630) 766-2218

Web site: www.chemimpex.com

Manufacturing site:

825 Dillon Drive

Wood Dale, IL 60191



Product Specifications

Catalogue Number	22929
Product	Brilliant Black BN
	Naphthol Black
	CI 28440
CAS Number	2519-30-4
Molecular Formula	C ₂₈ H ₁₇ N ₅ O ₁₄ S ₄ •4Na
Molecular Weight	867.69

Appearance	Black powder
Trace Metal Analysis	Lead (Pb): ≤ 2 mg/Kg Mercury (Hg): ≤ 1 mg/Kg Cadmium (Cd): ≤ 1 mg/Kg
Related Substances	Organic compounds other than coloring matters 4-Acitamido-5-Hydroxyinaphthalene-1,7-Disulphonic Acid 4-Amino-5-Hydroxyinaphthalene-1,7-Disulphonic Acid 8-Amino-naphthalene-2-Disulphonic Acid 4,4-Diazoaminodi-(Benzenesulphonic acid): ≤ 1%
Dye content	≥ 80%
Storage	Store at RT
Additional Information	Unsulphonated aromatic amines: ≤ 0.01% Ether extractable matter: ≤ 0.200% Susidiary Coloring Matters: ≤ 4%

For Laboratory Use Only