

Chem-Impex International, Inc.

Tel: (630) 766-2112

E-mail: sales@chemimpex.com

Shipping and Correspondence:

935 Dillon Drive

Wood Dale, IL 60191

Fax: (630) 766-2218

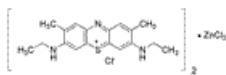
Web site: www.chemimpex.com

Manufacturing site:

825 Dillon Drive

Wood Dale, IL 60191

Product Specifications



Catalogue Number	22927
Product	New Methvlene Blue N Basic Blue 24 CI 52030
CAS Number	6586-05-6
Molecular Formula	$2C_{18}H_{22}N_3S \cdot 2Cl \cdot ZnCl_2$
Molecular Weight	832.12

Appearance	Brown or bronzy crystalline powder
UV Ratios	Spectrophotometric Assay conc. 5 mgs/Ltrs. in water At 632.0 ± 3 nm : 0.529 At 591.0 ± 3 nm : 0.433 At 287.0 ± 3 nm : 0.336 At 245.0 ± 3 nm : 0.192
Extinction Co-Efficient	E (632.0 ± 3 nm) : ≤ 44000 E (591.0 ± 3 nm) : ≤ 36000 E (287.0 ± 3 nm) : ≤ 28000 E (245.0 ± 3 nm) : ≤ 16000
Loss on Drying	$\leq 5\%$
Dye content	$\geq 90\%$
Storage	Store at RT

For Laboratory Use Only