

Chem-Impex International, Inc.

Tel: (630) 766-2112

E-mail: sales@chemimpex.com

Shipping and Correspondence:

935 Dillon Drive

Wood Dale, IL 60191

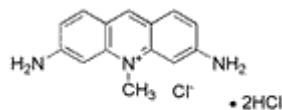
Fax: (630) 766-2218

Web site: www.chemimpex.com

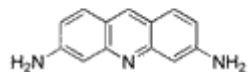
Manufacturing site:

825 Dillon Drive

Wood Dale, IL 60191



Product Specifications



Catalogue Number	22926
Product	Acriflavine hydrochloride 3,6-Diamino-10-methylacridinium chloride hydrochloride CI 46000
CAS Number	8063-24-9, 69235-50-3
Molecular Formula	C ₁₄ H ₁₄ N ₃ Cl
Molecular Weight	259.74

Appearance	Orange-red to red crystalline powder
Solubility	To pass test
Odor	Odorless
Water Content (Karl Fisher)	≤ 7%
Insoluble material	Water : To pass test
Sulfated Ash	≤ 1%
Assay (anhydrous basis)	98.5 - 105.0%
Storage	Store at RT
Additional Information	Taste : Acidic Certain other acridine derivative test : To pass test

For Laboratory Use Only