

Chem-Impex International, Inc.

Tel: (630) 766-2112

E-mail: sales@chemimpex.com

Shipping and Correspondence:

935 Dillon Drive

Wood Dale, IL 60191

Fax: (630) 766-2218

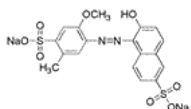
Web site: www.chemimpex.com

Manufacturing site:

825 Dillon Drive

Wood Dale, IL 60191

Product Specifications



Catalogue Number	22915
Product	Allura Red Food Red 17 CI 16035
CAS Number	25956-17-6
Molecular Formula	C ₁₈ H ₁₄ N ₂ O ₈ S ₂ •2Na
Molecular Weight	496.43

Appearance	Red to maroon crystalline powder
Heavy Metals	≤ 40 mg/kg
Cation	Lead (Pb) : ≤ 10 mg/kg Mercury : ≤ 1 mg/kg Chromium : ≤ 15 mg/kg Cadmium : ≤ 1 mg/kg
Insoluble material	≤ 0.2% (water)
Dye content	≥ 86%
Storage	Store at RT
Additional Information	Subsidiary dyes by mass : ≤ 3%

For Laboratory Use Only