

Chem-Impex International, Inc.

Tel: (630) 766-2112

E-mail: sales@chemimpex.com

Shipping and Correspondence:

935 Dillon Drive

Wood Dale, IL 60191

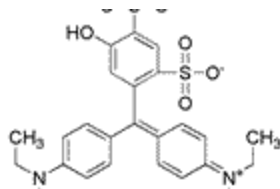
Fax: (630) 766-2218

Web site: www.chemimpex.com

Manufacturing site:

825 Dillon Drive

Wood Dale, IL 60191



Product Specifications

Catalogue Number	22906
Product	Patent Blue V sodium salt for Microscopy
	Acid Blue 3
	CI 42051
CAS Number	20262-76-4
Molecular Formula	C ₂₇ H ₃₁ N ₂ O ₇ S ₂ Na
Molecular Weight	582.7

Appearance	Dark blue powder
Heavy Metals	≤ 40 mg/kg
Arsenic (As₂O₂)	≤ 3 mg/kg
Cation	Lead (Pb): ≤ 10 mg/Kg Mercury (Hg): ≤ 1 mg/kg
Insoluble material	≤ 0.2% (in water)
Dye content	≥ 85%
Storage	Store at RT
Additional Information	Subsidiary dyes: ≤ 2.0% Leuco Base: ≤ 4.0% Combined ether extract: ≤ 0.2%

For Laboratory Use Only